



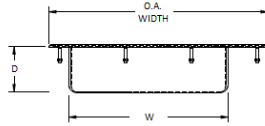
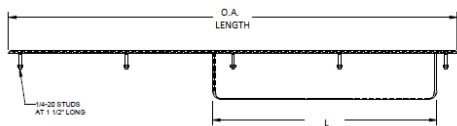
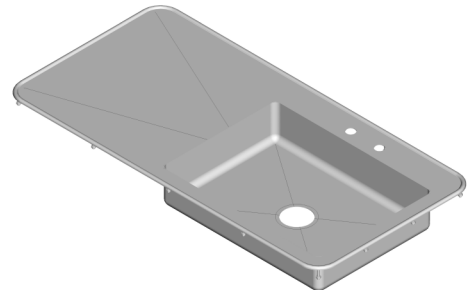
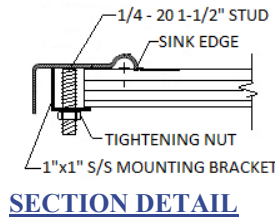
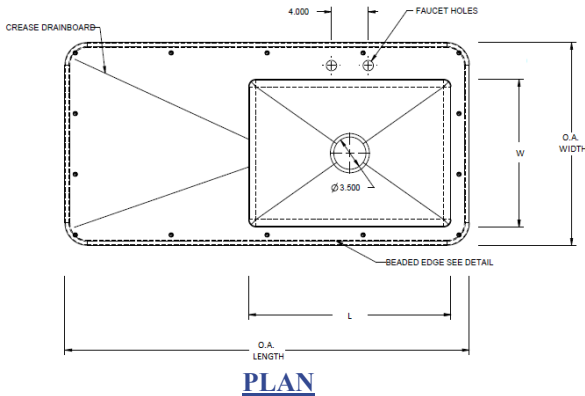
ONE COMPARTMENT DROP-IN SINK WITH ONE DRAINBOARD

PROJECT#: _____

ITEM# _____

MODEL# _____

Model #	Bowl Size L x W x D	O.A. Dims L x W	Model #	Bowl Size L x W x D	O.A. Dims L x W
DWD-1-1616-4.5-15 R OR L	16" x 16" x 4 1/2"	32 1/2" x 21 1/2"	DWD-1-2216-4.5-15 R OR L	22" x 16" x 4 1/2"	38 1/2" x 21 1/2"
DWD-1-1616-7.5-15 R OR L	16" x 16" x 7 1/2"	32 1/2" x 21 1/2"	DWD-1-2216-7.5-15 R OR L	22" x 16" x 7 1/2"	38 1/2" x 21 1/2"
DWD-1-1616-10-15 R OR L	16" x 16" x 10"	32 1/2" x 21 1/2"	DWD-1-2216-10-15 R OR L	22" x 16" x 10"	38 1/2" x 21 1/2"
DWD-1-1616-4.5-20 R OR L	16" x 16" x 4 1/2"	37 1/2" x 21 1/2"	DWD-1-2216-4.5-20 R OR L	22" x 16" x 4 1/2"	43 1/2" x 21 1/2"
DWD-1-1616-7.5-20 R OR L	16" x 16" x 7 1/2"	37 1/2" x 21 1/2"	DWD-1-2216-7.5-20 R OR L	22" x 16" x 7 1/2"	43 1/2" x 21 1/2"
DWD-1-1616-10-20 R OR L	16" x 16" x 10"	37 1/2" x 21 1/2"	DWD-1-2216-10-20 R OR L	22" x 16" x 10"	43 1/2" x 21 1/2"
DWD-1-1916-4.5-15 R OR L	19" x 16" x 4 1/2"	35 1/2" x 21 1/2"	DWD-1-2816-4.5-15 R OR L	28" x 16" x 4 1/2"	44 1/2" x 21 1/2"
DWD-1-1916-7.5-15 R OR L	19" x 16" x 7 1/2"	35 1/2" x 21 1/2"	DWD-1-2816-7.5-15 R OR L	28" x 16" x 7 1/2"	44 1/2" x 21 1/2"
DWD-1-1916-10-15 R OR L	19" x 16" x 10"	35 1/2" x 21 1/2"	DWD-1-2816-10-15 R OR L	28" x 16" x 10"	44 1/2" x 21 1/2"
DWD-1-1916-4.5-20 R OR L	19" x 16" x 4 1/2"	40 1/2" x 21 1/2"	DWD-1-2816-4.5-20 R OR L	28" x 16" x 4 1/2"	49 1/2" x 21 1/2"
DWD-1-1916-7.5-20 R OR L	19" x 16" x 7 1/2"	40 1/2" x 21 1/2"	DWD-1-2816-7.5-20 R OR L	28" x 16" x 7 1/2"	49 1/2" x 21 1/2"
DWD-1-1916-10-20 R OR L	19" x 16" x 10"	40 1/2" x 21 1/2"	DWD-1-2816-10-20 R OR L	28" x 16" x 10"	49 1/2" x 21 1/2"



Mechanical Specifications

- 16 gauge 304 stainless steel fabrication
- 3 1/2" drain opening with crumb cup drain and basket strainers 1 1/2" IPS
 - Fully welded, seamless and polished to a #3 commercial finish
 - Horizontal and vertical corners covered to a 3/4" radius
 - Die formed depression to drain in bowl bottom
 - 1 set of faucet holes 4" o.c.
 - 1" x 1" stainless steel mounting bracket
 - 1/4 - 20 studs @ 1 1/2" long welded to underside of sink edge
 - Feathered edge around perimeter of sink bowl on all 4 sides
 - NSF listed and labeled

Optional

- 14 gauge 304 stainless steel fabrication available
 - Different bowl sizes and depths
 - Additional faucet drillings
- Sound deadening to underside of sink bowl
 - ADA options